



## Main Features

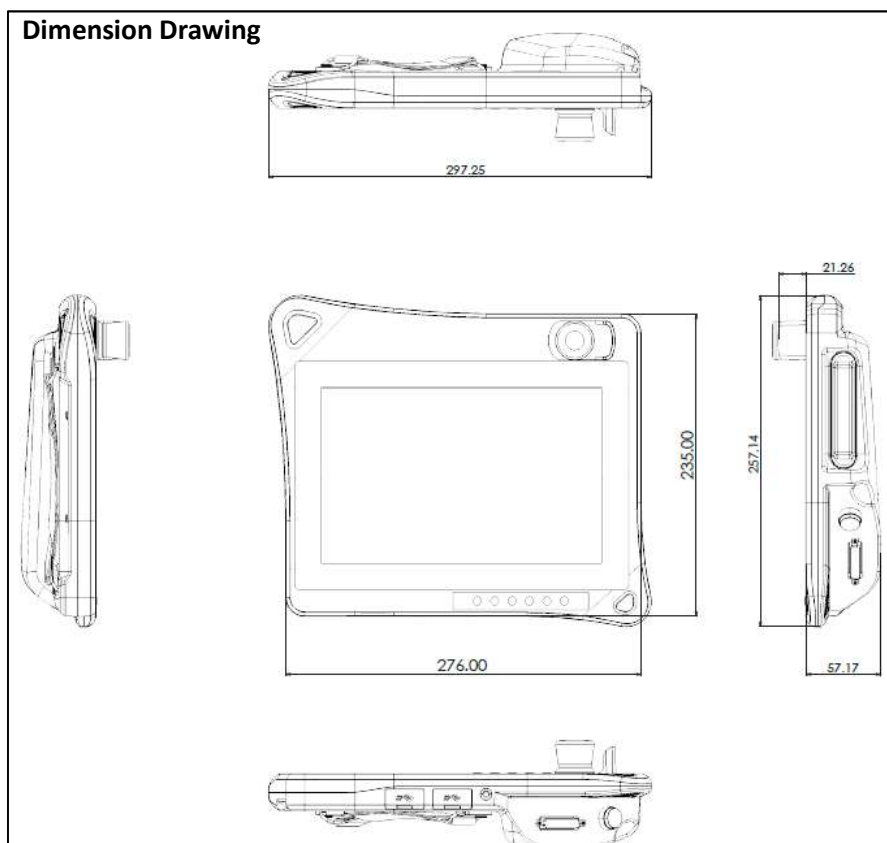
- ◆ 10.1" WXGA 1280x800 400 nits LED panel
- ◆ 5 points projected capacitive touch with Full IP40 protection
- ◆ 3-Position Enabling switch & E-Stop Button
- ◆ EMC (IEC/EN 61000-6-2/4) compliance
- ◆ System frame ground protection(GPE) design

## Specification

Technical Data	TP-100-C	Technical Data	TP-100-C
Panel	<ul style="list-style-type: none"> <li>- 10.1", 16:10, WXGA, 1280 x 800</li> <li>- Luminance: 400 cd/m2</li> <li>- Contrast ratio: 800:1</li> <li>- LCD color: 16.7M</li> <li>- Viewing angle: 89 (U), 89 (D), 89 (L), 89 (R)</li> <li>- Backlight: LED</li> </ul>	Interface	<ul style="list-style-type: none"> <li>- Data back-up: 2 x USB 2.0</li> <li>- Control connector: HDB-44 female</li> <li>&gt; Removable HDB-44 control cable (optional)</li> <li>&gt; Including power, E-stop buttons, 3-Position enabling switch, button switch, USB 2.0 and VGA signals</li> </ul>
Touch	<ul style="list-style-type: none"> <li>- Touch: 5 points P-Cap</li> <li>- Touch light transmission: 87%</li> <li>- Touch interface: USB</li> <li>- Anti-scratch surface: 7H hardness</li> </ul>	Ratings	<ul style="list-style-type: none"> <li>- Power supply voltage: 24 Vdc (19.2 to 28.8 Vdc)</li> <li>- Current consumption:</li> <li>&gt; TP-100-C 0.625A at 24Vdc (max.)</li> </ul>

Technical Data	TP-100-C	Technical Data	TP-100-C
Safety Elements	<ul style="list-style-type: none"> <li>- Emergency stop button (2 NC channels, B10d=100,000)</li> <li>&gt; Contact function: latching</li> <li>&gt; Reset: by rotating</li> <li>- 3-position enabling switch (3 channels 2 NO &amp; 1 NC, B10d=100,000)</li> </ul>	Mechanical	<ul style="list-style-type: none"> <li>- Dimension: 297.3 x 257.2 x 57.2 mm (78.5mm including E-stop button)</li> <li>- Weight (without external control cable): &gt; TP-100-C 1.5Kg</li> <li>- Front bezel: aluminum magnesium alloy; color: Black</li> <li>- Back cover: ABS+PC; color: Pantone 432C</li> <li>- IP protection class: Full IP40</li> </ul>
Operating Elements	2-position button switch (1NO & 1NC)	Environment	<ul style="list-style-type: none"> <li>- Operating temperature: 0°C to 50°C</li> <li>- Storage temperature: -20°C to 75°C</li> <li>- Operating humidity: 5%~90% relative humidity, non-condensing</li> <li>- Vibration resistance/shock-proof/free-fall</li> </ul>
System	<ul style="list-style-type: none"> <li>- TP-100-C: VGA input</li> <li>- USB 2.0 upstream</li> </ul>	Certifications	<ul style="list-style-type: none"> <li>- CE (Emission EN61000-6-4; Immunity EN61000-6-2 for installation in industrial environments)</li> <li>- FCC Class A</li> </ul>

**Dimension Drawing**



## Function and Ergonomic design



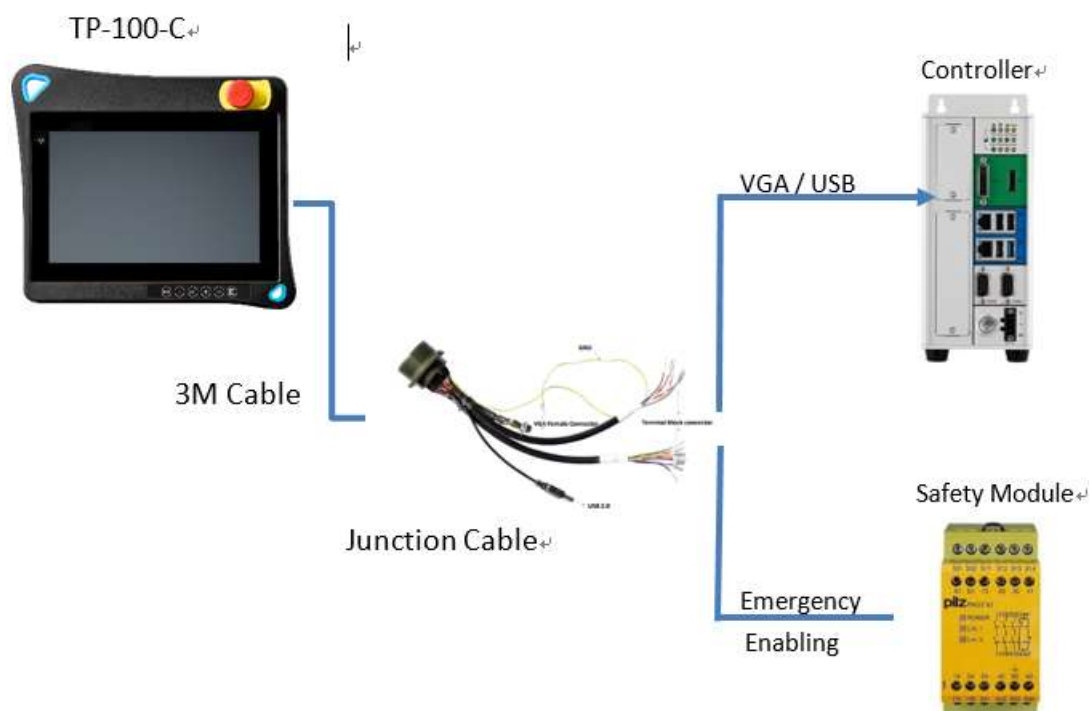
## Membrane Keys



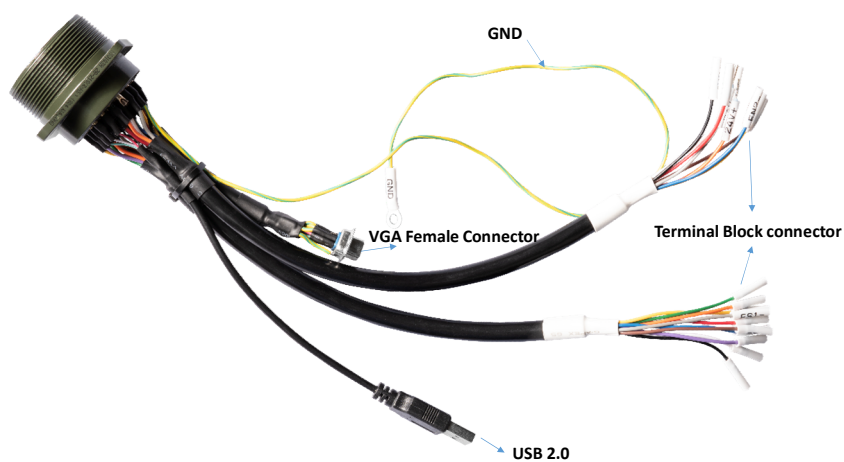
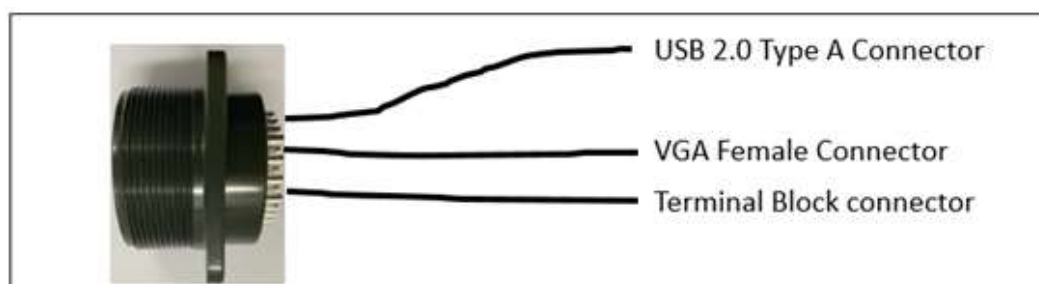
The TP-100-C's membrane keys are located at the lower-right of the teach pendant, each membrane key is mapping to the real-keyboard signal, review the key definitions below:

Key Definition	Defined Keyboard Mapping
<b>M/A</b>	[Ctrl] + [Shift] + [ m ]
<b>Stop</b>	[Ctrl] + [Shift] + [ s ]
<b>Play/Pause</b>	[Ctrl] + [Shift] + [ p ]
<b>+</b>	[Ctrl] + [Shift] + [ ] ]
<b>-</b>	[Ctrl] + [Shift] + [ [ ]
<b>Error Log</b>	[Ctrl] + [Shift] + [ e ]

## Connection example



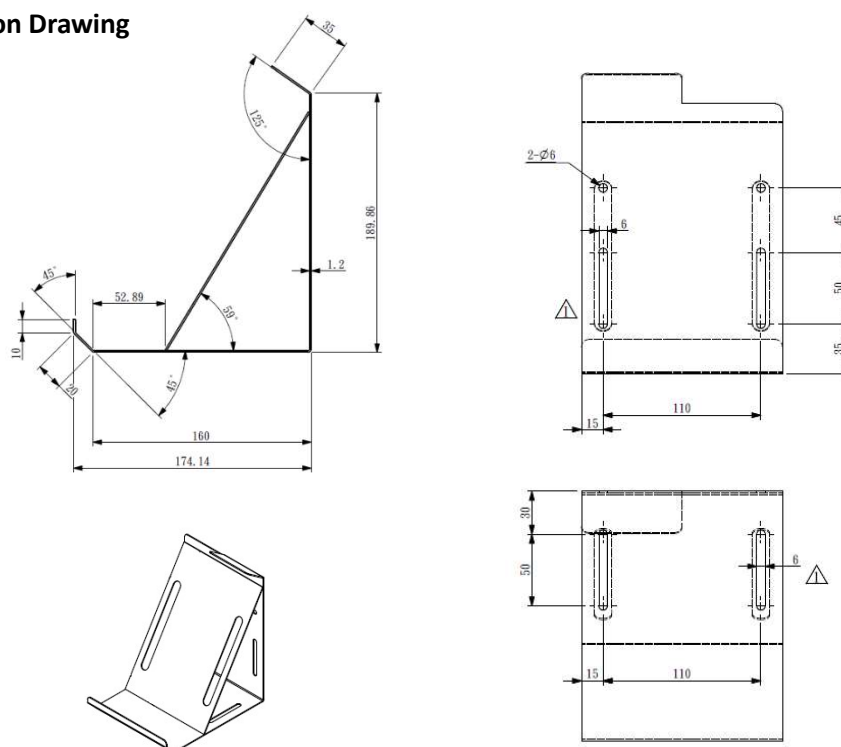
## Junction Cable



## TP-100 Holders(Optional)



### Dimension Drawing



### Ordering Information

- TP-100-C (P/N: 10IH0010015X0)  
10.1" multi- touch teach pendant display
- TP-100-VGA-J-Cable (P/N: 6030000511X00)  
TP-100-C Junction Cable
- TP-100 Cable (P/N: 686030000003F)  
External 3m cable for TP-100-C
- (Option)TP-100 Holders (P/N: 98ROBO000011F)  
Holder for TP-100-C